



WINE QUALITY SOLUTIONS

NOMA *Sense*® CO₂ P2000 Quick Guide

1. Getting started

- Press ON/OFF key to turn on/off the device



2. Temperature selection

- Press TEMP/MEM to activate the temperature selection function
- Press MEASURE to select the required temperature, from 0°C to 25°C in steps of 5°C
- Validate your temperature setting by pressing ON/OFF Key



1



2



3

3. Measurement

- Fill 50 mL of wine to measure into the test bottle and close it with rubber septum and the aluminum cap

Note: to ensure the best repeatability, it is recommended to use a graduated cylinder of 50 mL to fill the flask

- Shake the bottle vigorously for 10 seconds
- Open the valve of the syringe in order to expulse pressure from the bottle when piercing the septum
- Pierce the septum with the syringe
- Close the valve as soon as the needle is positioned in the headspace of the test bottle
- Press MEASURE to launch measurement
- Result appears on the display after 10 seconds

Note: Before the next measurement, evacuate all CO₂ gas particles of the flask by filling it totally with water

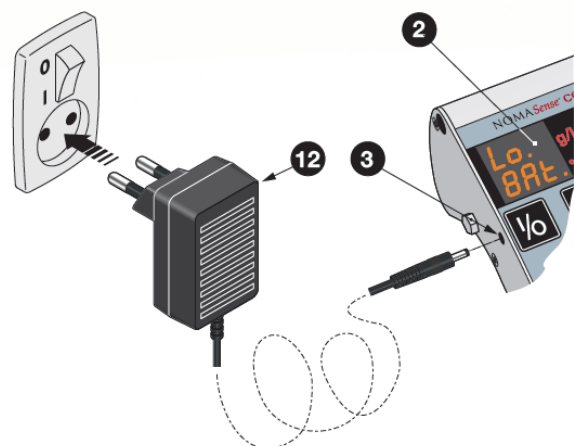


4. Calibration

- Calibration is required when a known content of CO₂ is measured and value deviates by more than 0.1 - 0.2 g/L
- **Always perform first 0 % CO₂ gas calibration**
 - Prepare a 100 % N₂ flow through a hose
 - Atmospheric air can also be used to perform 0 % calibration (make sure that there is no CO₂ concentration around the place where the syringe is measuring)
 - Press and hold the (MEASURE) key. Now press (TEMP/MEM) key, then release both keys
 - Put the syringe into the N₂ flow – **make sure the flow is as smooth as possible (0.2 – 1.0 L/min)**
 - Device automatically recognize whether a 0 % or 100 % is being supplied
 - In this case, device switch betweenb “CAL” and “0.0”
 - If not, select the correct calibration gas by pressing the (MEASURE) + (TEMP/MEM) keys again
 - Calibration takes 45 sec
- **Perform then 100 % CO₂ gas calibration**
 - Prepare a 100 % CO₂ gas calibration
 - Press and hold the (MEASURE) key. Now press (TEMP./MEM) key, then release both keys
 - Put the syringe into the N₂ flow – **make sure the flow is as smooth as possible (0.2 – 1.0 L/min)**
 - Device automatically recognize whether a 0 % or 100 % is being supplied
 - In this case, device switch between “CAL” and “100”
 - If not, select the correct calibration gas by pressing the (MEASURE) + (TEMP/MEM) keys again
 - Calibration takes 45 sec
- **To stop calibration press ON/OFF**

5. Battery charging

- When the display shows **LoBAT** ; charge the battery
- Connect the battery charger into the device and into the power supply



6. Replace needles, filters and valves

- Change needle, filter and valve in case of aberrantly values or if particles or liquid has been sucked